

## **1-BUCKET SLEDGE CONVEYOR :**

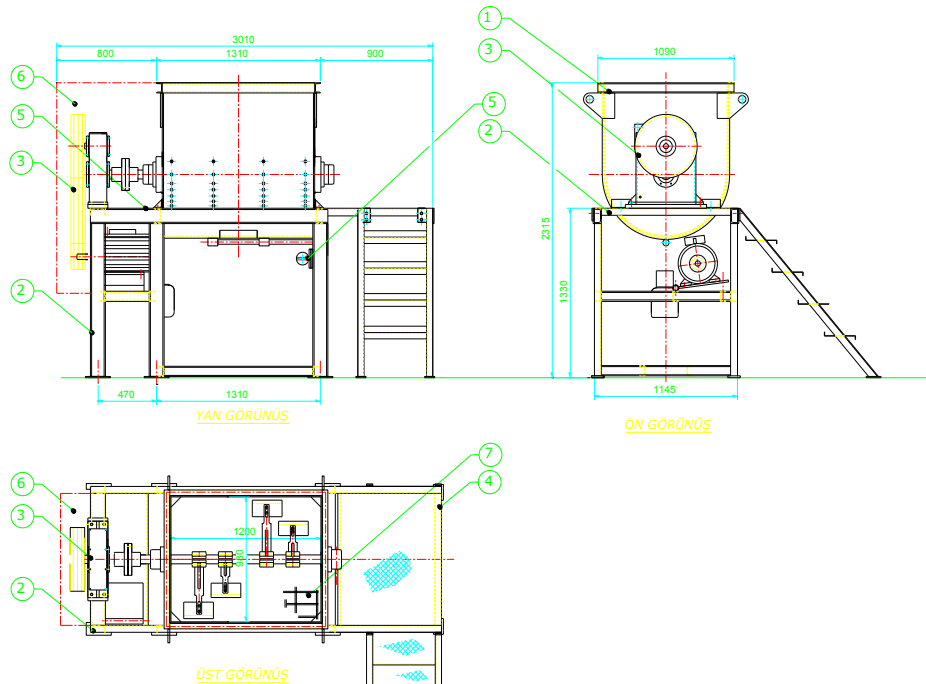
Volume 500dm<sup>3</sup> feeds the concrete mixer bucket with pulley system with 4 kW.



## **2-CB500 COMPULSORY MIXER:**

CB500 single twin shaft concrete mixer has 0,5m<sup>3</sup> volume and has 15kW power in total. Mixer bars are fastened with bolts and manufactured from manganous steel casting.

The inner part of the concrete mixer is equipped with lining sheet bars. Each of these components is mounted with bolts. Body metal sheet thickness: 10mm Body liner: 15mm ST 52  
Top of the concrete mixer is sealed with grid casing. Dumping cover is operated hydraulically.



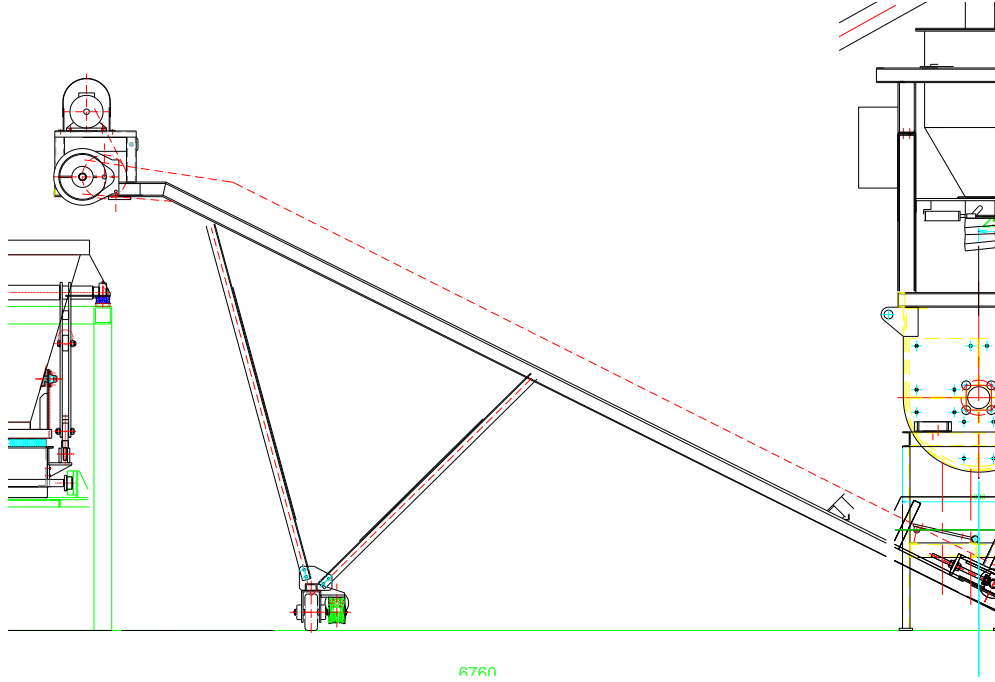
- The mixing process is the most critical and significant point of concrete mixing work in terms of providing maximum homogeneity as soon as possible.
- Synchronous twin shaft type mixers are the most advantageous system providing maximum homogeneity.
- The mixing process in which all of the concrete is blended with the aggregate in minimum period, low-water-concrete ratio is provided in twin shaft mixers. In this context, the concrete in a wide range from zero slump mixing to high slump mixing is obtained.
- The mixer reducers are manufactured by Tarmaş A.Ş.
- 



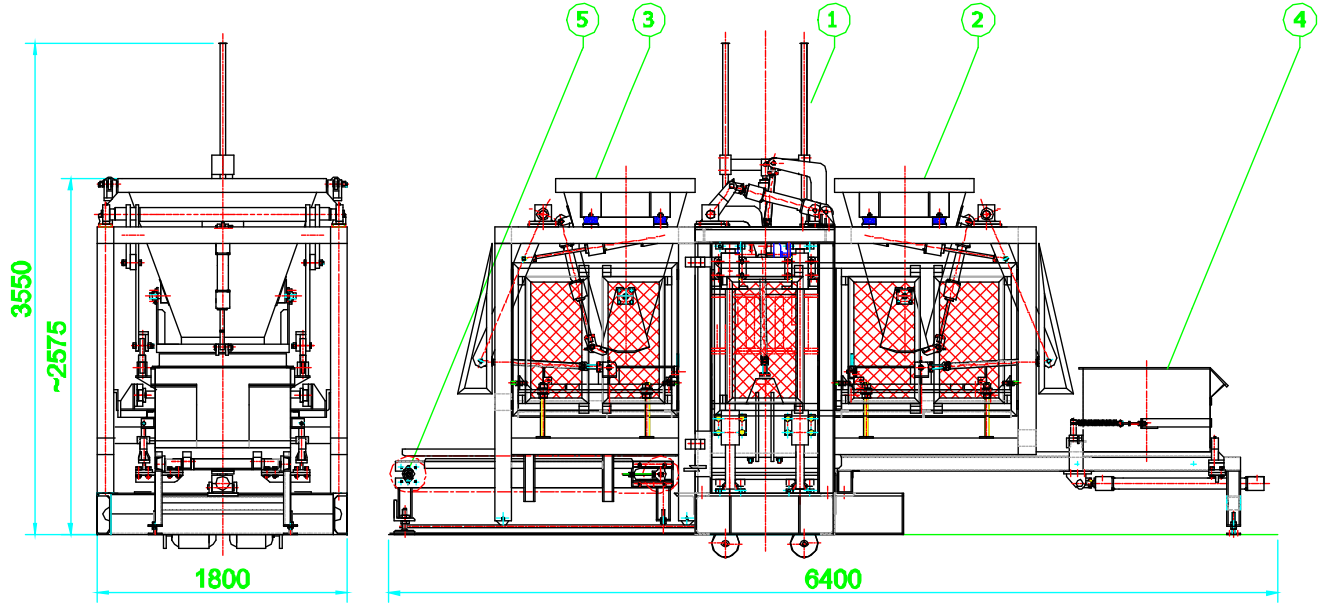
CB500 FORCED CONCRETE MIXERS

### **3-MORTAR CONVEYOR BAND**

It is 600mm in width and 7000mm in length. The belt has 3 line  $\varnothing 89$  conveyor rollers and its rubber has EP125 4/4/2 specification, 10mm total thicknees. The driving drum is coated with rubber and it prevents spinning. There are scraper rubbers at the front and back side. Power band is 3kw and rotary power 1.1 kw.



## 4-PM20 DOUBLE SILO MACHINE



1. PRESS GROUP
2. COARSE MORTAR GROUP
3. COLOUR MORTAR GROUP
4. PALETTE MAGAZINE
5. OUTPUT AUTOMAT

**PM20** Concrete Parquette Machine works with hydraulic move and pressure with vibration. It presses interlock stone, briquette, asmolen, water channel, lawn stone, open draigne stone etc. upon to the wooden palettes.

PM20	TECHNICAL SPECIFICATIONS
CONTROL PANEL	MANUAL
TOTAL ELECTRIC POWER	60 KW
UNIT OF LOWER VIBRATOR	4 UNIT 5.5 KW
UNIT OF UPPER VIBRATOR	2 UNIT 1.3 KW
MOULD AREA	840MM X 810MM
PALETTE SIZE	950MM X 1000MM
PRESS TIME	~30 SEC/UNIT
SMALLEST-BIGGEST PRODUCT HEIGHT	60MM - 300MM

## **5-STOWAGE ROBOT**

Stacking robot will arrange on top of the product for the forklift will take the way.

Hydraulic motor: 7.5 kW, 1500rpm  
Moving Motor: 1.1 kW x 2 = 2.2 kW  
Pump Power: 22cc



There is a need for 1000 pieces wooden palette for the daily production of finished good.(40x1000x950mm)

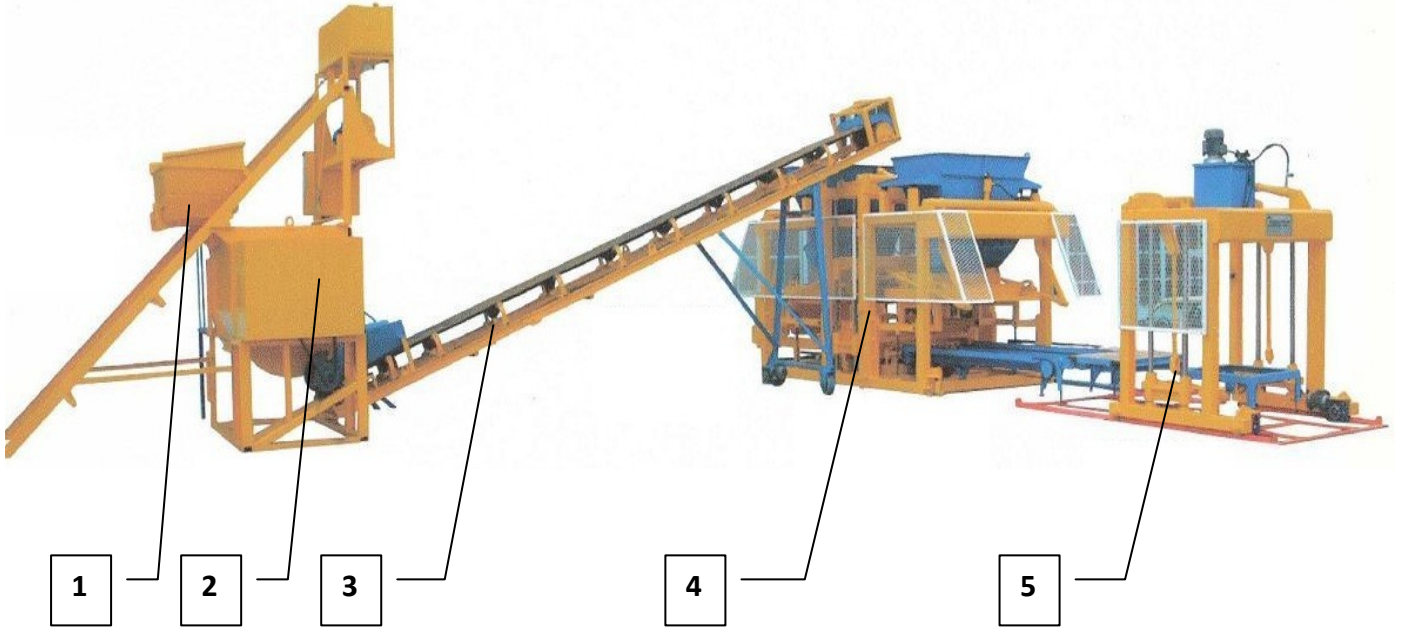
In our offer wooden pallets prices are not included.

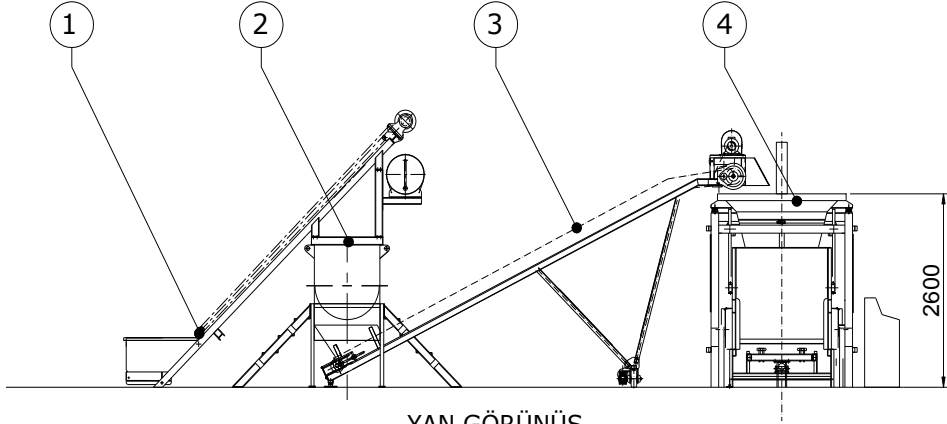
If we can agree about this plant we can give you all technical details about the wooden palets.



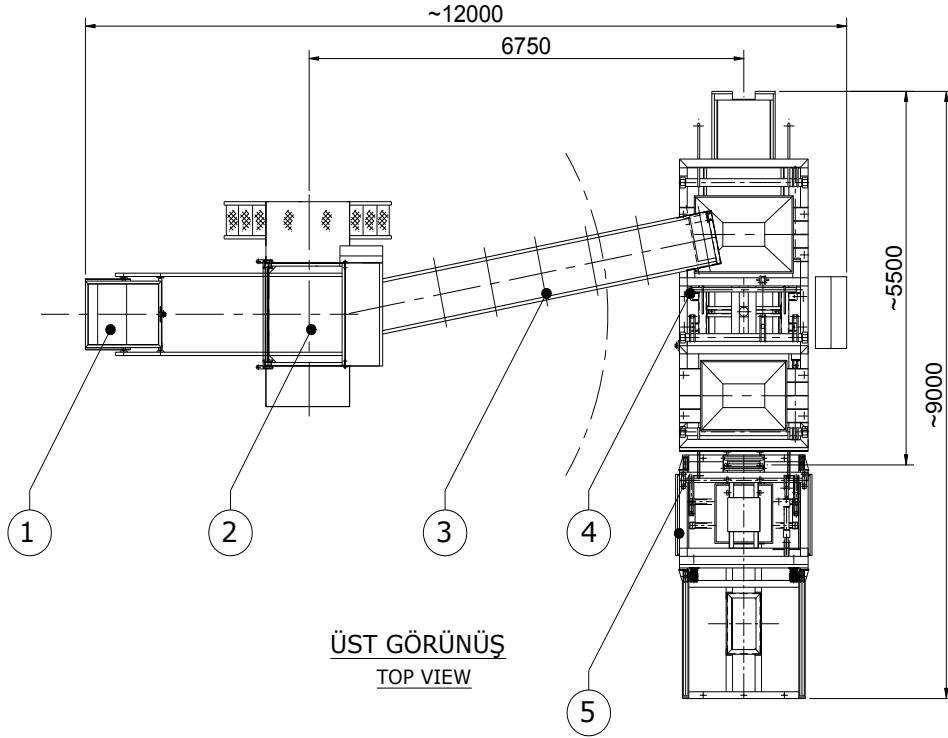
ANKARA / TÜRKİYE [www.tarmas.com.tr](http://www.tarmas.com.tr)

PRODUCTS	PRODUCED STONE UNIT IN 1 PRESS	PRODUCED STONE UNIT IN 1 HOUR	PRODUCED TOTAL m <sup>2</sup> IN 1 HOUR	PRODUCT UNIT IN 1 m <sup>2</sup>
SINGLE HEXAGON STONE	12	1440	62	23
MOONSTONE	18	2160	72	30
BAKLAVA STONE	15	1800	66	27
DRIPSTONE	15	1800	56	32
RECTANGULAR PRISM	21	2520	50	50
BROAD WAIST STONE	10	1200	57	21
FINE FORM STONE	25	3000	150	20
INTER LOCK STONE	20	2400	68	35
(S) CORNERED STONE	18	2160	45	48
CUBE STONE	49	5880	58	100
CORK STONE	15	1800	69	26
DAISY STONE	9	1080	51	21
HONEYCOMB STONE	20	2400	80	30
S STONE	21	2520	70	36
TRAYSTONE	9	1080	63	17
LEAF STONE	10	1200	40	30
LAWN STONE	2	240	34	7
SINGLE LAWN STONE	15	1800	60	30
BORDERS 150x300x500	2	240	120	2
BORDERS 150x300x700	2	240	120	2
GARDEN BORDER	4	480	120	4
BORDER MOLD	12	1440	180	8
FLOWER GARDEN BORDER	3	360	180	2
WATER CHUTE	6	720	180	4
DEEP WATER CHUTE	6	720	180	4
OPEN DRAIGNE STONE	2	240	60	4
BRICKS 100x200x400	14	1680	84	20
BRICKS 150x200x400	8	960	80	12
BRICKS 200x200x400	8	960	96	10
BRICKS 250x200x400	6	720	90	8
BRICKS 300x225x500	2	240	30	8
ASMOLEN 200x200x400	8	960	96	10
ASMOLEN 250x200x400	6	720	90	8





YAN GÖRÜNÜŞ  
SIDE VIEW



ÜST GÖRÜNÜŞ  
TOP VIEW

5	1	İSTİF ROBOTU	STOWAGE ROBOT	İR20	-
4	1	PARKE MAKİNASI	PARQUET MACHINE	PM20E 2H	-
3	1	DÖNER HARÇ BANDI	MOVING CONVEYOR BELT	HB.6070	-
2	1	CEBRİ BETONİYER	COMPULSORY MIXER	CB.500	-
1	1	KOVA KIZAK SİSTEMİ	BUCKET SLEDGE CONVEYOR	KK.500	-
PDS Nr.	PCS.	DEVICE NAME		DESCRIPTION	KW

	Date	Name	Signe	 TEL.:395 39 08/09 FAKS:395 52 99 tarmas@tarmas.com.tr www.tarmas.com.tr		
DrawnBy	02.02.2007	Ö.MENEVSE				
Control	02.02.2007	M.KAPLAN				
St.Control	02.02.2007	M.SEVİLMİS				
SCALE	Draw	PM20E BETON PARKE İMAL TESİSİ		Pic. Nr.	PM20E.00.06	REV
					-	