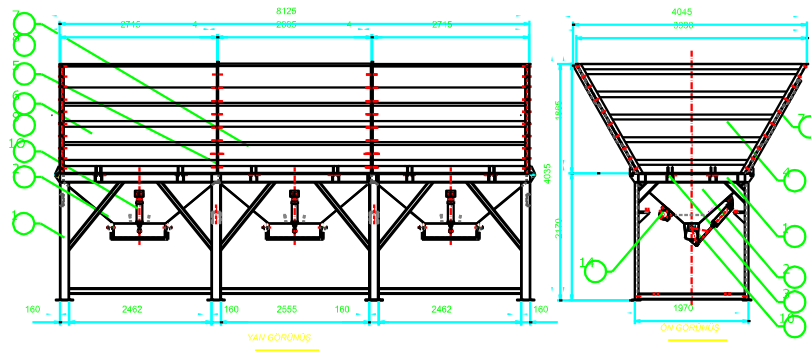


1-AGREGA BUNKER:

3 units of bunkers each of which are manufactured from 4 and 5 mm twisted metal sheet in 15m³ volume are carried by NPU160 profile chassis. The side gates are hinged and they are laterally open during transport.

The vibromotors (3x0,47kW) are connected to each bunker in order to facilitate the dumping of the material.

3x15m³ bunkers and weighing belt are designed in dimensions fit in a container during transport. The side gates are hinged and they are laterally open on the chassis.

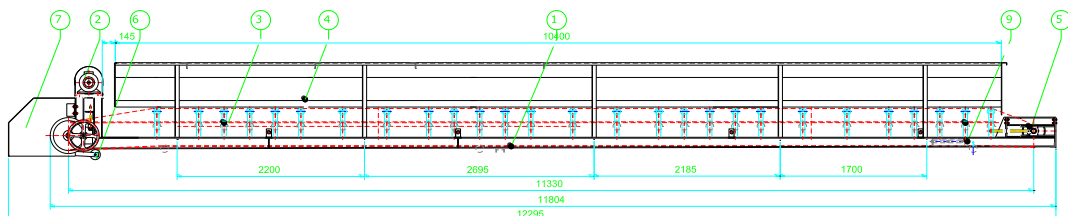


2-LOAD (WEIGHING)BELT CONVEYOR:

The weighing belt placed under aggregate bunker in 800 mm width and 9500mm length controls the gates by performing precise weighing with load cell connections from four points. 7.5kW motor.

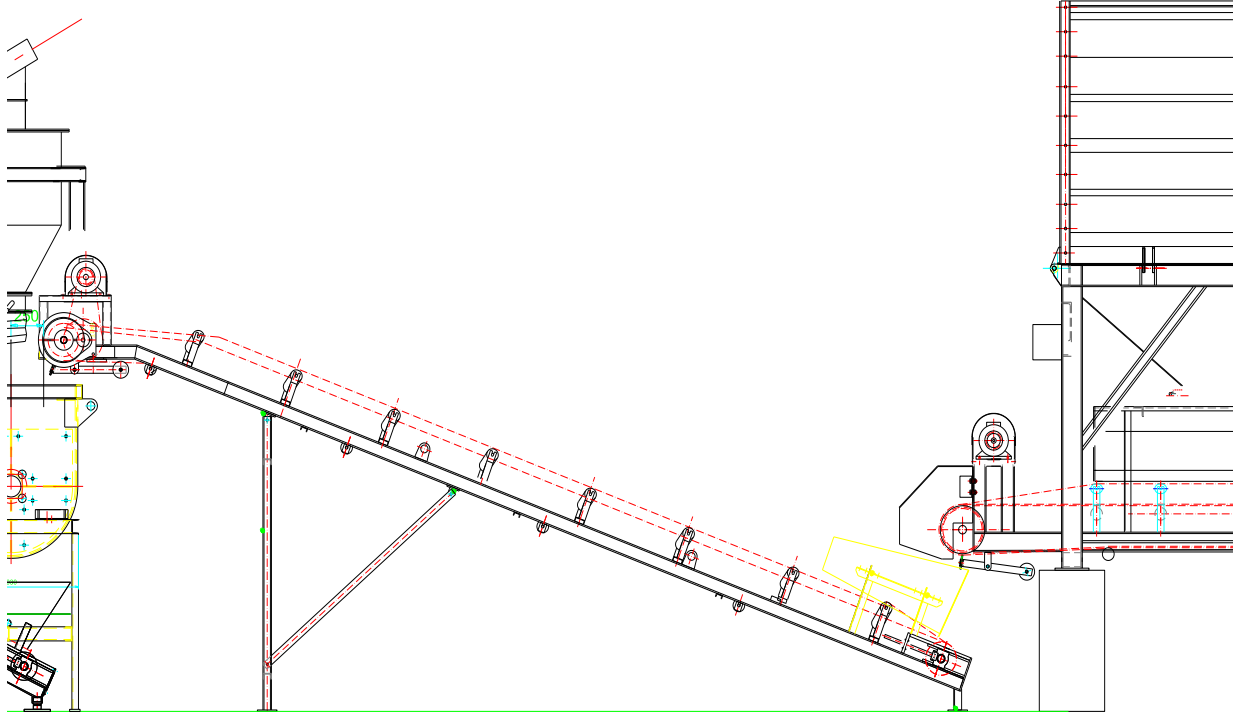
The belt has 3 line Ø89 conveyor rollers and its rubber has EP125 4/4/2 specification.

The driving drum is coated with rubber and it prevents spinning. There are scraper rubbers at the front and back side.



3-BELT CONVEYOR :

It conveys the materials obtained from weighing band to mixers rapidly. It is 800mm in width and 7000mm in length. The belt has 3 line $\varnothing 89$ conveyor rollers and its rubber has EP125 4/4/2 specification. The driving drum is coated with rubber and it prevents spinning. There are scraper rubbers at the front and back side. 4 kW motor.



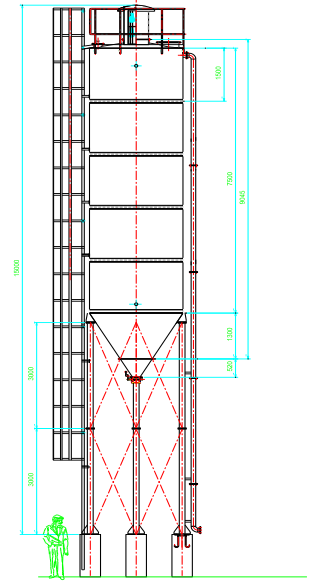
View of Sand Conveyor Belt

4-CEMENT SİLO :

The cement silos having 50 ton capacity are 4 steel pillar chassis. The funnel metal sheet is manufactured from 5 mm and the body is manufactured from 4mm.

There are stairs in and out of the silo for railing and climbing.

Filling and discharging sensors, flow inlet air boiling system and filter pulses are available.



The cement flow can be controlled at the flow inlet by chock block system.

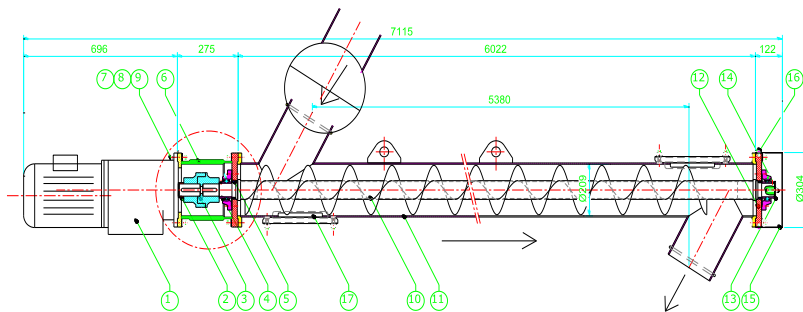
Silo funnel is supported as a circle by NPU100 and upper sides with NPU80 profiles.

5-CEMENT SCREW CONVEYOR, CEMENT AND WATER WEIGHING SYSTEM:

The cement conveyors are manufactured as 260mm in diameter and 5.5m in length and they have cleaning door and juncture charging hole. Power screw conveyor is 7.5 kW

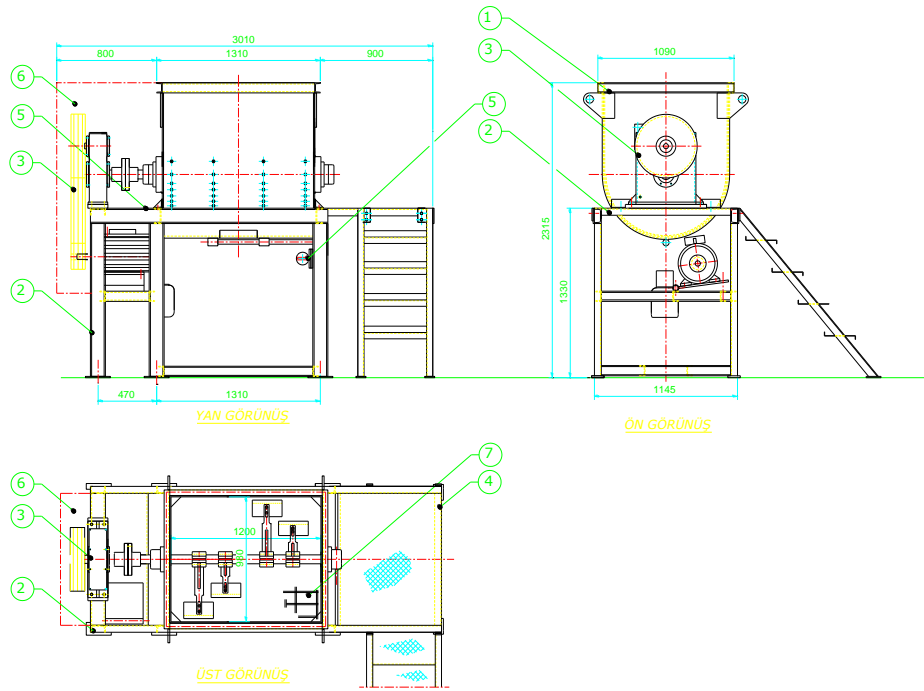


The Cement weigher performs precise weighing with the load cells connected from three points and conducts rapid discharge with pneumatic chock block. The water weigher also performs flow of water weighed through load cell automatically with actuator valve.



6-CB500 FORCED CONCRETE MIXER:

- CB500 single twin shaft concrete mixer has 0,5m³ volume and has 15kW power in total. Mixer bars are fastened with bolts and manufactured from manganous steel casting.
- The inner part of the concrete mixer is equipped with lining sheet bars. Each of these components is mounted with bolts.
- Top of the concrete mixer is sealed with grid casing. Dumping cover is operated hydraulically.



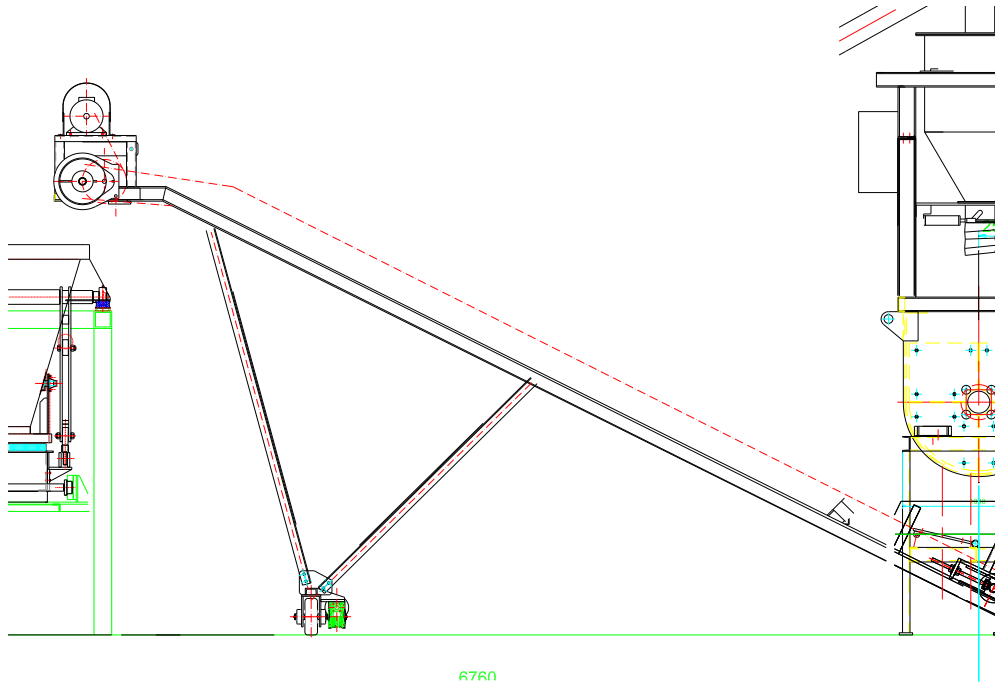
- The mixing process is the most critical and significant point of concrete mixing work in terms of providing maximum homogeneity as soon as possible.
- Synchronous twin shaft type mixers are the most advantageous system providing maximum homogeneity.
- The mixing process in which all of the concrete is blended with the aggregate in minimum period, low-water-concrete ratio is provided in twin shaft mixers. In this context, the concrete in a wide range from zero slump mixing to high slump mixing is obtained.
- The mixer reducers are manufactured by Tarmaş A.Ş.



CB500 FORCED CONCRETE MIXERS

7-MORTAR BELT CONVEYOR :

It is 600mm in width and 7000mm in length. The belt has 3 line Ø89 conveyor rollers and its rubber has EP125 4/4/2 specification. The driving drum is coated with rubber and it prevents spinning. There are scraper rubbers at the front and back side. Power band is 3kw and rotary power 1.1 kw.



8-COMPRESSOR:

Air compressor 550L capacity and 13Bar pressure.

Collecting 3/4"

Weight ~250kg



9-PLC CONTROL PANEL (CONCRETE PROCESSING GROUP)



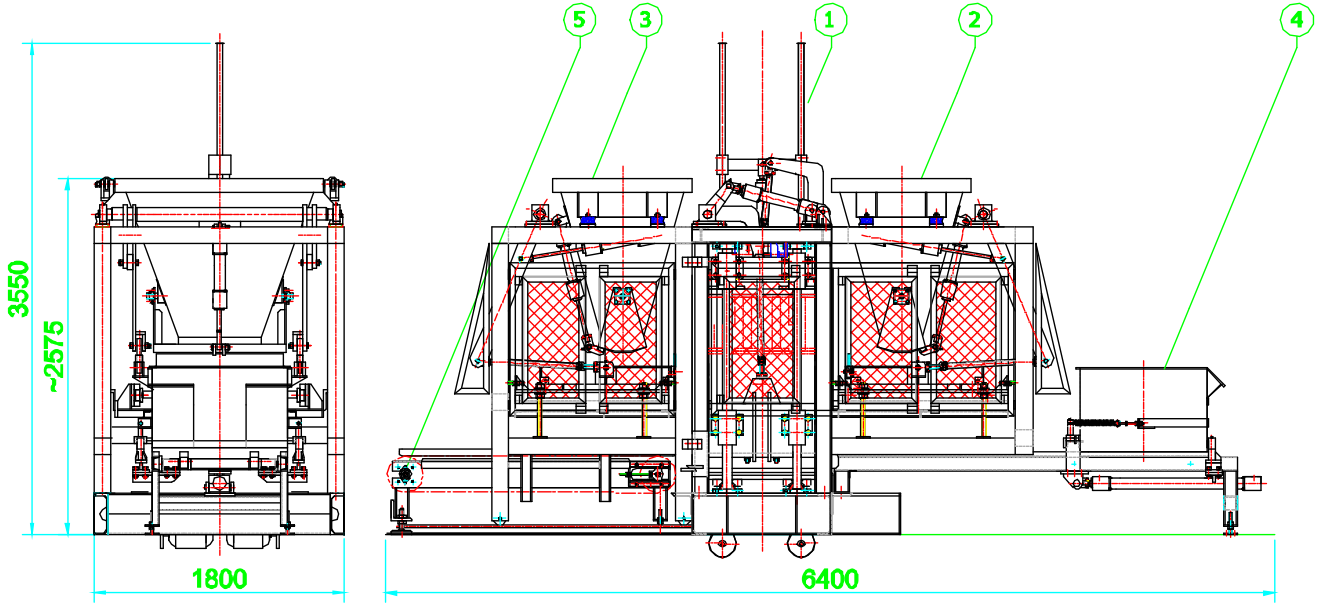
The switching equipment of the cabinet is the Siemens brand.

Touch Screen Display 15 " Delta brand is used.

PLC CONTROL CABIN



10-PM20 DOUBLE SILO MACHINE:



1. PRESS GROUP
2. COARSE MORTAR GROUP
3. COLOUR MORTAR GROUP
4. PALETTE MAGAZINE
5. OUTPUT AUTOMAT

PM20 Concrete Parquette Machine works with hydraulic move and pressure with vibration. It presses interlock stone, briquette, asmolen, water channel, lawn stone, open draigne stone etc. upon to the wooden palettes.

PM20	TECHNICAL SPECIFICATIONS
CONTROL PANEL	MANUAL
TOTAL ELECTRIC POWER	60 KW
UNIT OF LOWER VIBRATOR	4 UNIT 2 TON
UNIT OF UPPER VIBRATOR	2 UNIT 2 TON
MOULD AREA	840MM X 810MM
PALETTE SIZE	950MM X 1000MM
PRESS TIME	~30-35 SEC/UNIT
SMALLEST-BIGGEST PRODUCT HEIGHT	60MM - 250MM

11-STACK MACHINE:

Stacking robot will arrange on top of the product for the forklift will take the way.



12-PLC CONTROL PANEL (PM MACHINE)



PLC control panel



Electric unit

The switching equipment of the cabinet is the Siemens brand.

Touch Screen Display 15 " Delta brand is used.



ANKARA / TÜRKİYE www.tarmas.com.tr

PRODUCTS	PRODUCED STONE UNIT IN 1 PRESS	PRODUCED STONE UNIT IN 1 HOUR	PRODUCED TOTAL m ² IN 1 HOUR	PRODUCT UNIT IN 1 m ²
SINGLE HEXAGON STONE	12	1440	62	23
MOONSTONE	18	2160	72	30
BAKLAVA STONE	15	1800	66	27
DRIPSTONE	15	1800	56	32
RECTANGULAR PRISM	21	2520	50	50
BROAD WAIST STONE	10	1200	57	21
FINE FORM STONE	25	3000	150	20
INTER LOCK STONE	20	2400	68	35
(S) CORNERED STONE	18	2160	45	48
CUBE STONE	49	5880	58	100
CORK STONE	15	1800	69	26
DAISY STONE	9	1080	51	21
HONEYCOMB STONE	20	2400	80	30
S STONE	21	2520	70	36
TRAYSTONE	9	1080	63	17
LEAF STONE	10	1200	40	30
LAWN STONE	2	240	34	7
SINGLE LAWN STONE	15	1800	60	30
BORDERS 150x300x500	2	240	120	2
BORDERS 150x300x700	2	240	120	2
GARDEN BORDER	4	480	120	4
BORDER MOLD	12	1440	180	8
FLOWER GARDEN BORDER	3	360	180	2
WATER CHUTE	6	720	180	4
DEEP WATER CHUTE	6	720	180	4
OPEN DRAIGNE STONE	2	240	60	4
BRICKS 100x200x400	14	1680	84	20
BRICKS 150x200x400	8	960	80	12
BRICKS 200x200x400	8	960	96	10
BRICKS 250x200x400	6	720	90	8
BRICKS 300x225x500	2	240	30	8
ASMOLEN 200x200x400	8	960	96	10
ASMOLEN 250x200x400	6	720	90	8

PRODUCT SAMPLES

